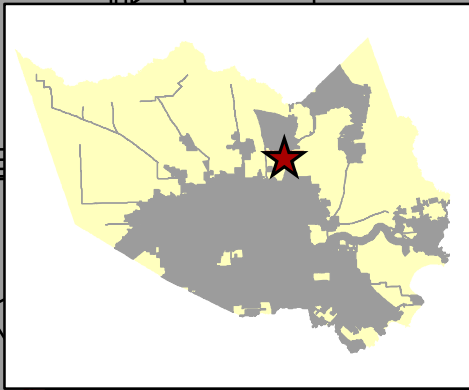
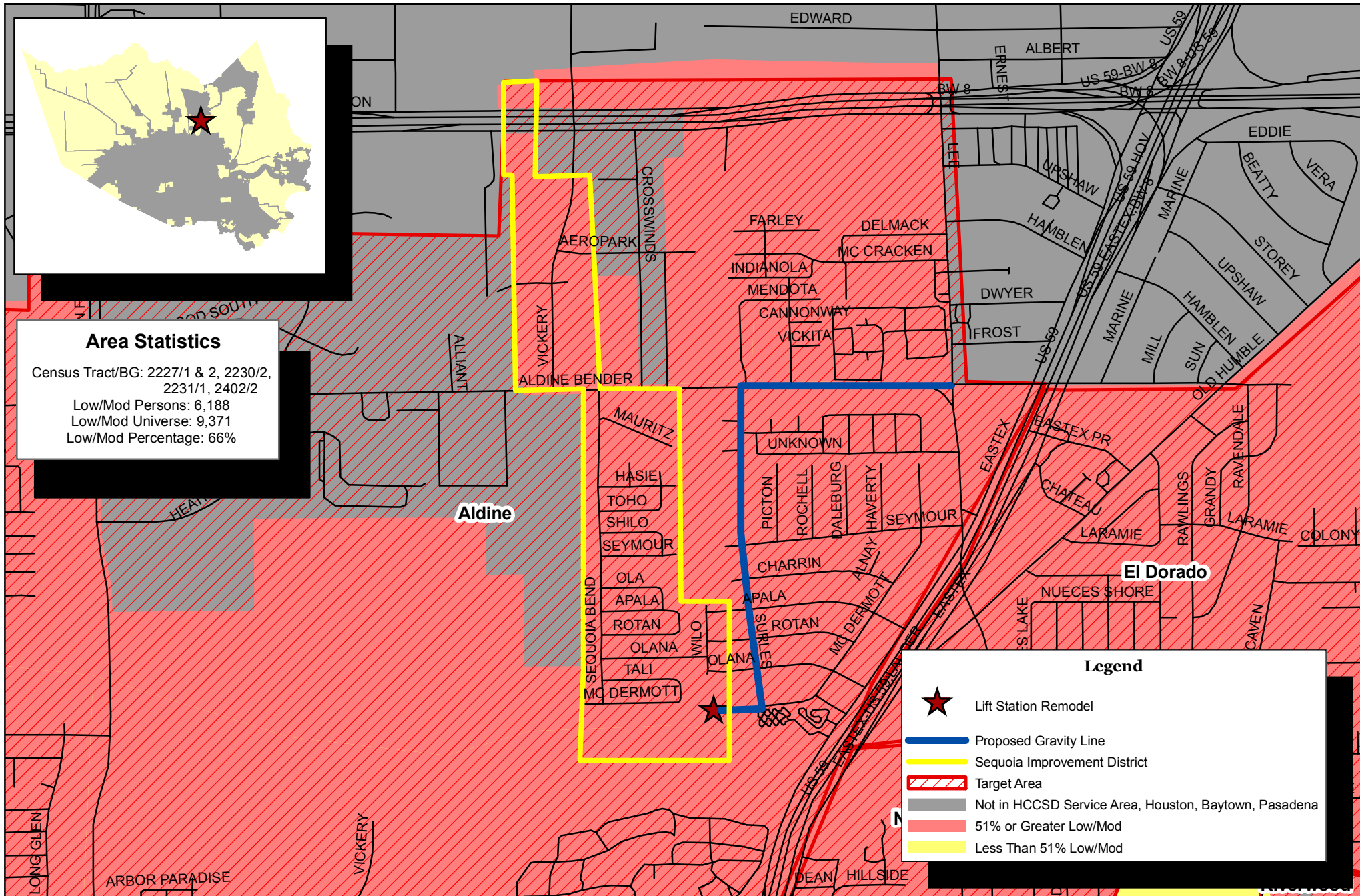


PY 2010 Sequoia Improvement District - Wastewater Regionalization Construction Phase



Area Statistics

Census Tract/BG: 2227/1 & 2, 2230/2,
2231/1, 2402/2
Low/Mod Persons: 6,188
Low/Mod Universe: 9,371
Low/Mod Percentage: 66%



Aldine

El Dorado

Legend

- Lift Station Remodel
- Proposed Gravity Line
- Sequoia Improvement District
- Target Area
- Not in HCCSD Service Area, Houston, Baytown, Pasadena
- 51% or Greater Low/Mod
- Less Than 51% Low/Mod