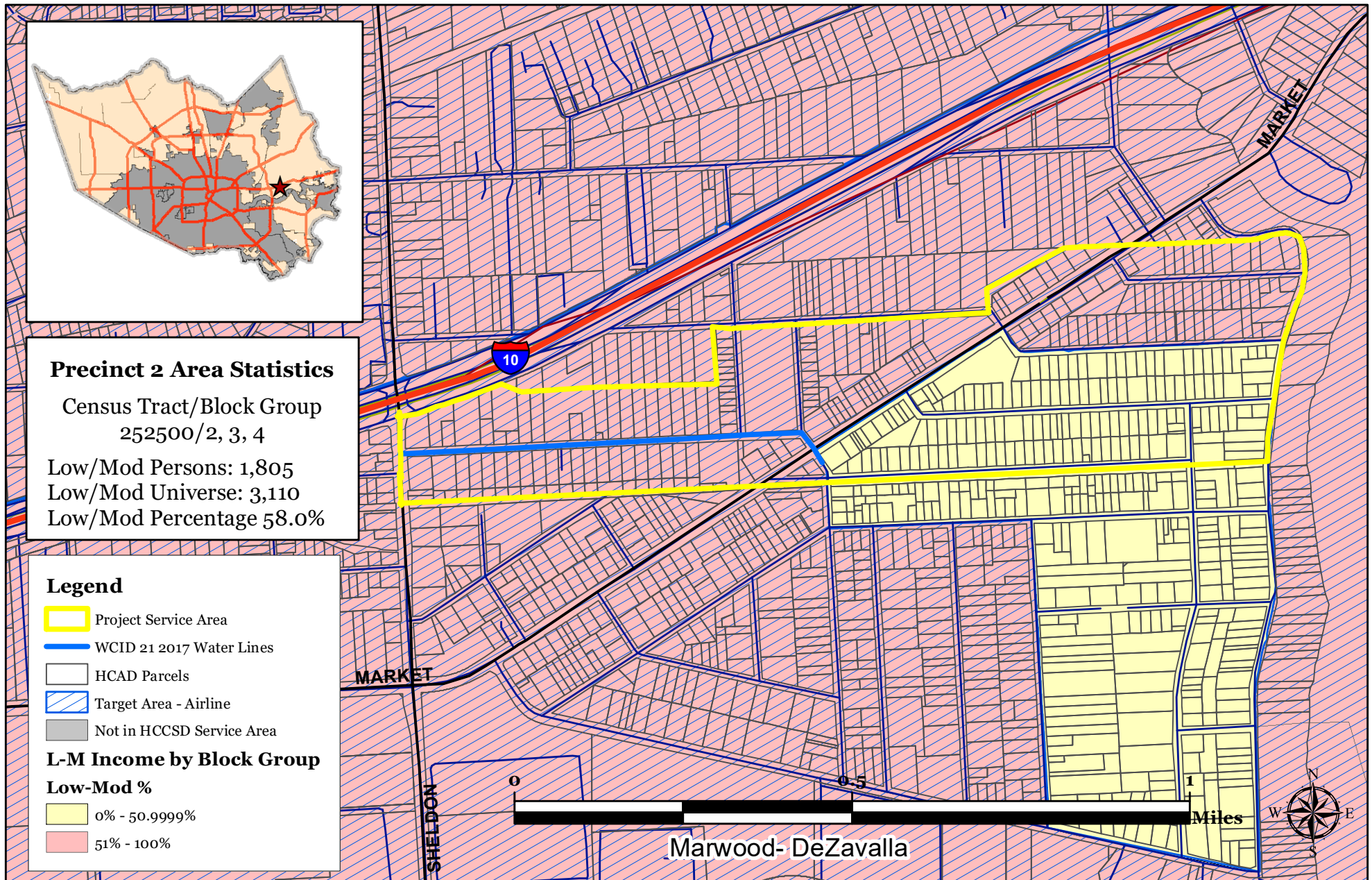


PY 2017 - Harris County W.C. & I.D. 21 Water Supply and Fire Protection Improvement



© HCCSD 2016. This product is for informational purposes and may not have been prepared for or be suitable for legal, engineering, or surveying purposes. It does not represent an on-the-ground survey and represents only the approximate relative location of property boundaries/location. The Harris County Community Services Department (HCCSD), 8410 Lantern Point Drive, Houston, TX 77054 (plancomments@csd.hctx.net) stipulates no warranty of fitness or merchantability either real or implied. Use at your own risk. This product can only be duplicated after written permission from HCCSD.

*L-M Income: Low to Moderate Income